

John Kiki

John Kiki

Published by Gallery K

Photography by Gallery K

Catalogue design Miranda Violari

ISBN 978-1-907983-13-9

Copyright © Gallery K 2018

Copyright © John Kiki 2018

Gallery K

14 Evrou , Strovolos, 2003, Nicosia

Tel. +357 22341122, Fax. +357 22341124

Email: info@gallerykcyprus.com

www. gallerykcyprus.com

Front cover: LOVERS, oil on canvas, 1994, 105x80cm

Back cover: HORSE AND RIDER, oil on paper, 1994, 70x96cm. Detail



14 Evrou, Strovolos, 2003, Nicosia Tel. +357 22 341122, Fax. +357 22 341124

Open Monday to Friday 9.30 - 13.00 3.30 - 19.00, Saturday 10.00 - 16.00

www.gallerykcyprus.com info@gallerykcyprus.com

John Kiki's figures are loosely delineated by the wiry spaghetti lines which serve both to fix them onto the canvas, and to give them a vibrancy and mobility against a background, typically, of flat planes of colour. He paints rapidly, canvases spread out on the floor. He insists that "the subject matter doesn't matter; There is no message."

Kiki hails originally from Cyprus and although he paints the classical myths, his upbringing in Great Yarmouth, England (where he still lives) has been more important to his art than the Mediterranean. The slightly louche vigour of the seaside town, the razzle-dazzle of the funfair, the bright lights and the bustling movement of the seafront and piers have fed into his imagery. These qualities and the passion to recreate the intensity of the spontaneous experience are apparent in his work.

He studied at the Camberwell School of Arts (1960-64) under Auerbach, Procktor and Uglow and graduated from the Royal Academy Schools (1964-1967). By the time he finished his studies in 1967, he had developed a unique style, a fusion between figurative painting, abstraction and Pop Art. The Academy were so impressed by his work that when they opened a new gallery to exhibit work by former students in 1972, Kiki was given the very first exhibition there.

Between 1992 and 1994 he worked on the Carmina Burana Experience, a project commissioned by Art Esprit. Most of the etchings in the current exhibition are part of the Carmina Burana series.

The British artist's long career has included shows in celebrated galleries such as the Royal Academy, the Tate, Hayward, Barbican, and Serpentine in London, the OK Harris Gallery in Soho, New York and the Galerie Wahrenberger in Zurich. The influences on his work are many and varied. There are elements of Jackson Pollock, Francis Bacon, Matisse, Euan Uglow, de Kooning, Baselitz, Picasso, the abstract expressionists.

However, the "greatest and most lasting influence" is, in his own words, his teacher, Frank Auerbach, who, together with pop artist Patrick Procktor, made him "rethink his strategy," to develop from the tight, measured style of his early work, into the looser, fluid style which currently typifies his work.

THREE MEN AND A GIRL, oil on paper, 1999, 74x101cm





HECUBA III, mixed media on paper, 1991/92, 105X75cm



LOVERS, oil on canvas, 1994, 105x80cm

TWO LADIES, oil on canvas, 1993, 106x155cm



HORSE AND RIDER, oil on paper, 1994, 70x96cm



In 1993, Art Esprit commissioned John Kiki to produce a series of paintings based on a most fascinating collection of satires and student songs, which the world knows today as the Carmina Burana. Dating back to the 11th-13th century, the poems, whose dramatized lyrics are sourced to religion, were written in Medieval Latin. According to Karl Young* "the poets of the Carmina Burana are young 'with the youth of waving branches and running water.' In their song there is no melancholy:

in taverna quando sumus
non curamus quid sit hummus*

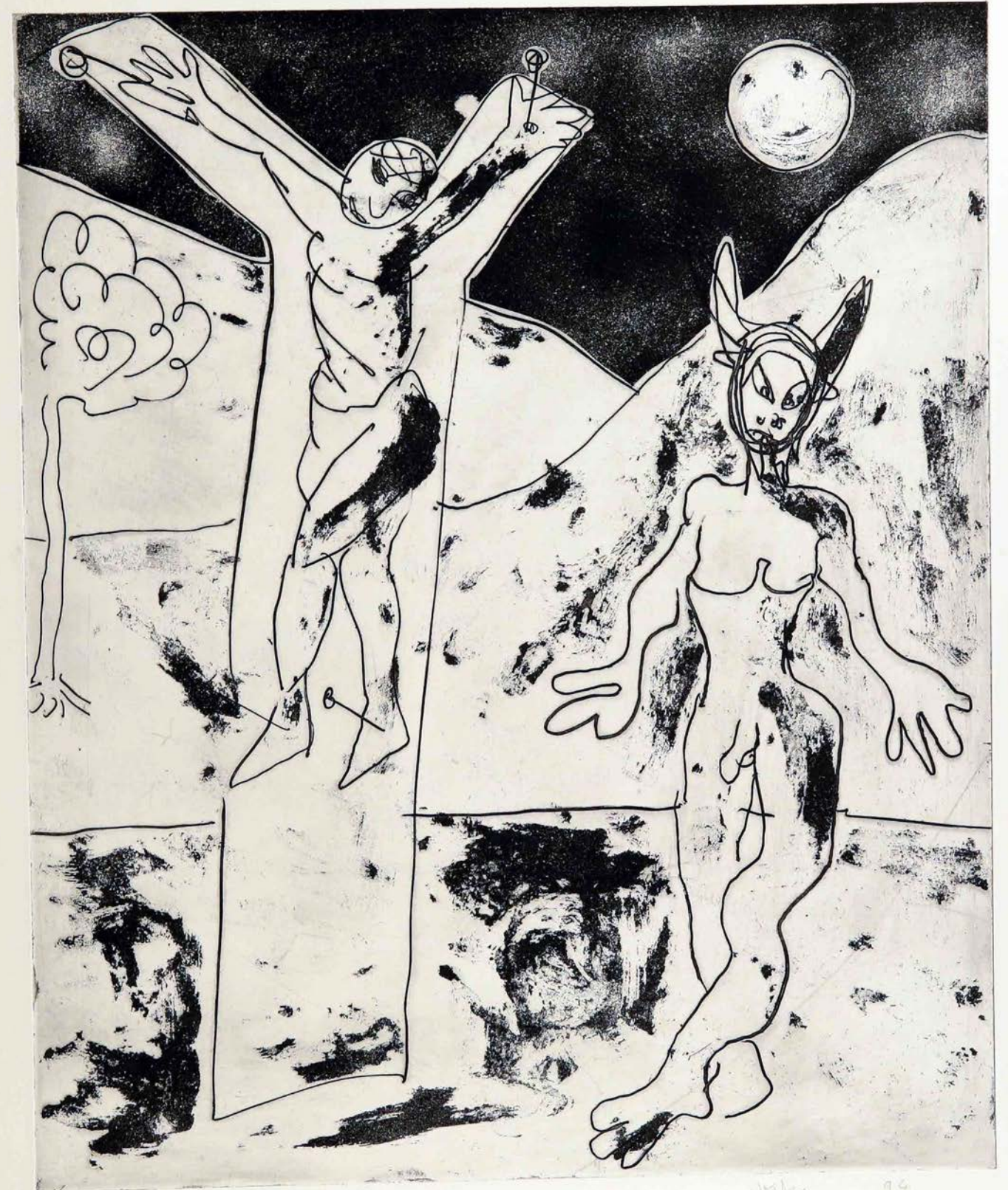
The majority of etchings in the Gallery K's collection of John Kiki's works are part of the Carmina Burana - inspired series. John Kiki's etchings are, just like the Carmina Burana songs, youthful, full of freedom, with a sense of adventure and an air of nonchalance. Kiki's emphasis is on instinct, spontaneity and overflowing energy.

*The Drama of the Medieval Church *Oxford* 1932

* Schmeller's Edition 235, 175 fol 87.b

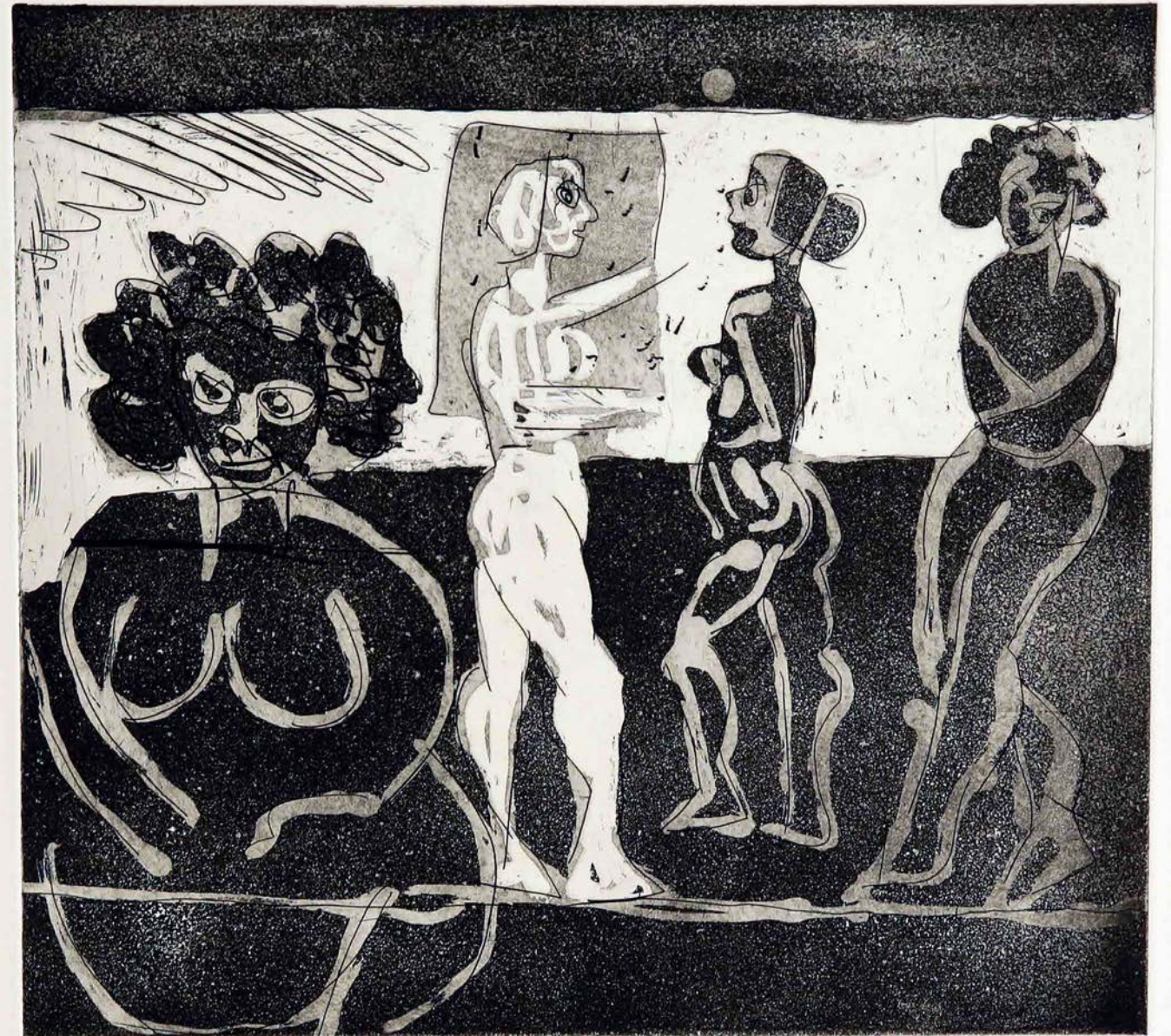
CHRIST OR ANTICHRIST (CARMINA BURANA), etching-aquatint , 1994, 45x37cm

Exhibited at the Barbican Centre, The Carmina Burana of 20th Century, 26 November 1996 - 5 January 1997



LIA (CARMINA BURANA), etching-aquatint, 1994, 27x30cm

Exhibited at the Barbican Centre, The Carmina Burana of 20th Century, 26 November 1996 - 5 January 1997

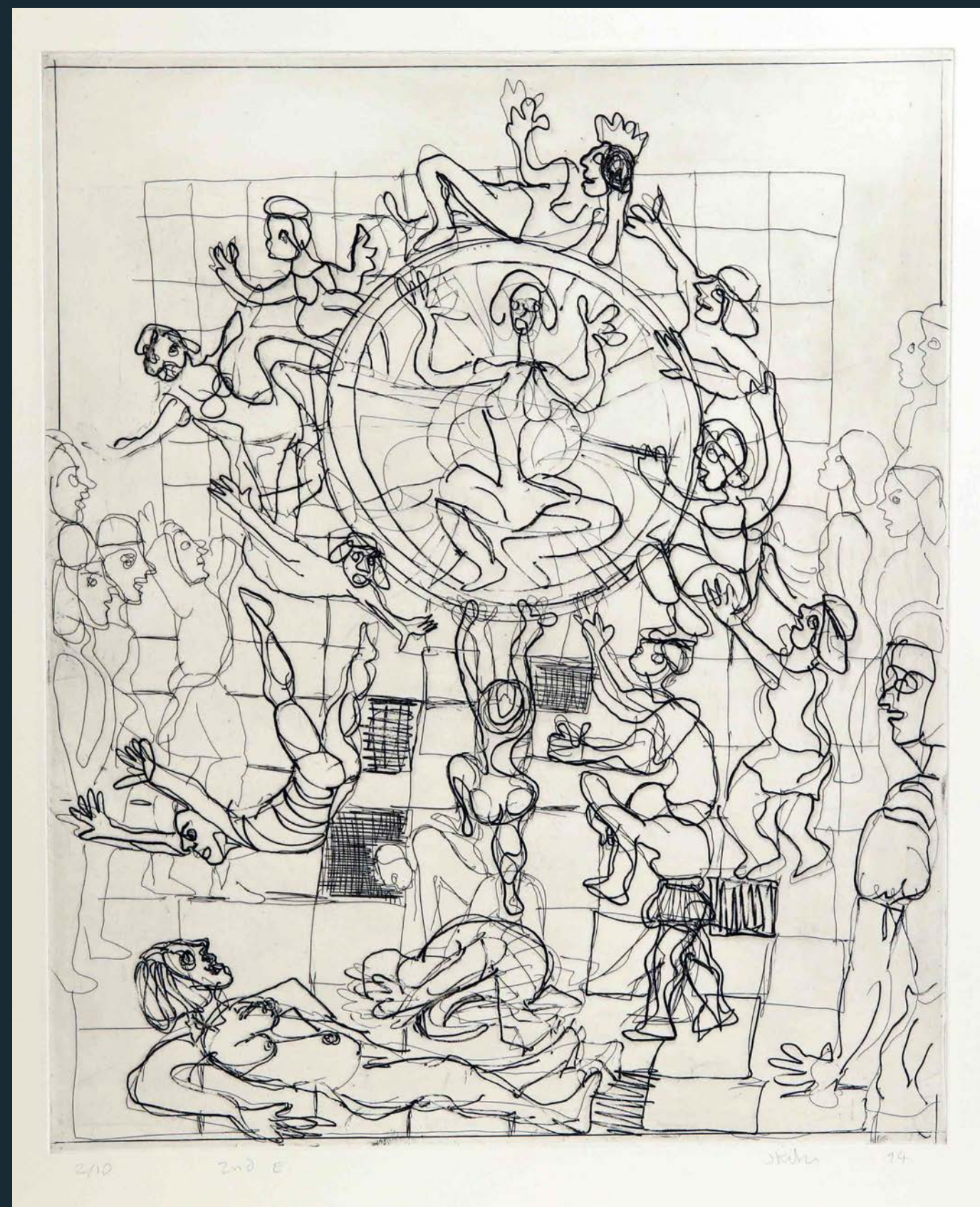


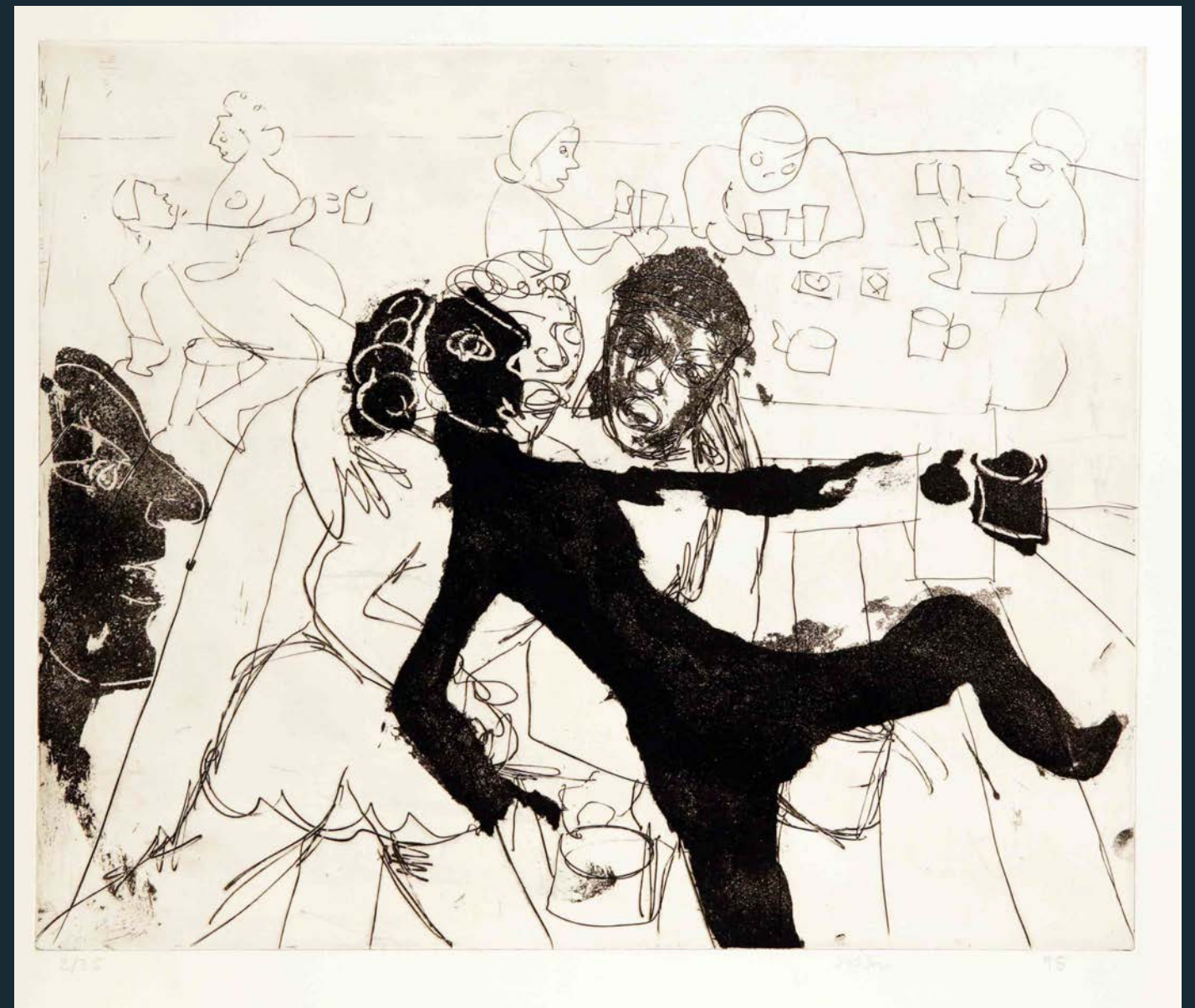
1/10 2nd 1/2 J. Kuhn 94

DANCE OF THE MAIDENS (CARMINA BURANA), etching-aquatint, 1999, 45x37cm
Exhibited at the Barbican Centre, The Carmina Burana of 20th Century, 26 November 1996 - 5 January 1997



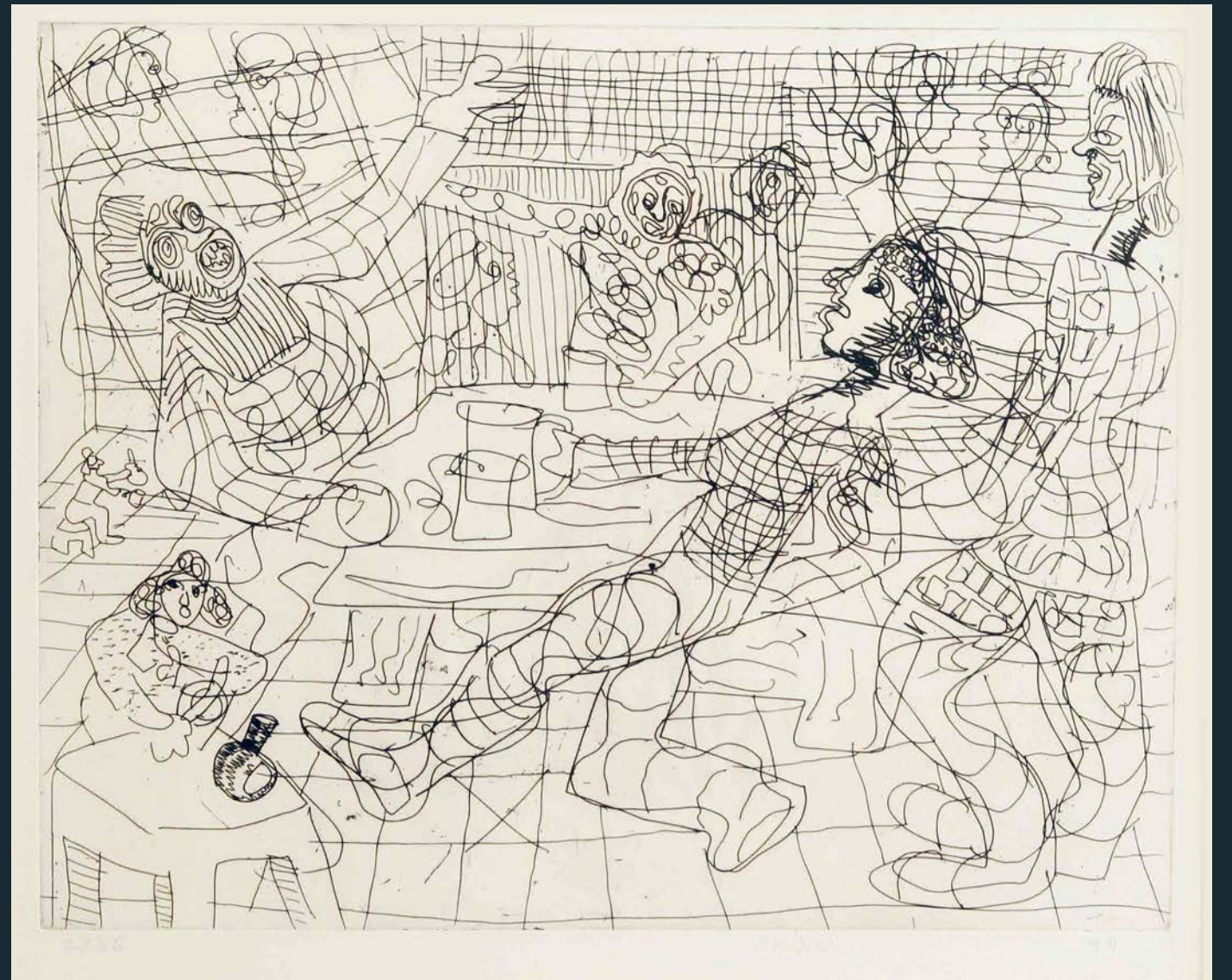
WHEEL OF FORTUNE (CARMINA BURANA), etching, 1994, 45x37cm





DRUNKEN SCENE (CARMINA BURANA), etching-aquatint, 1994, 45x37cm

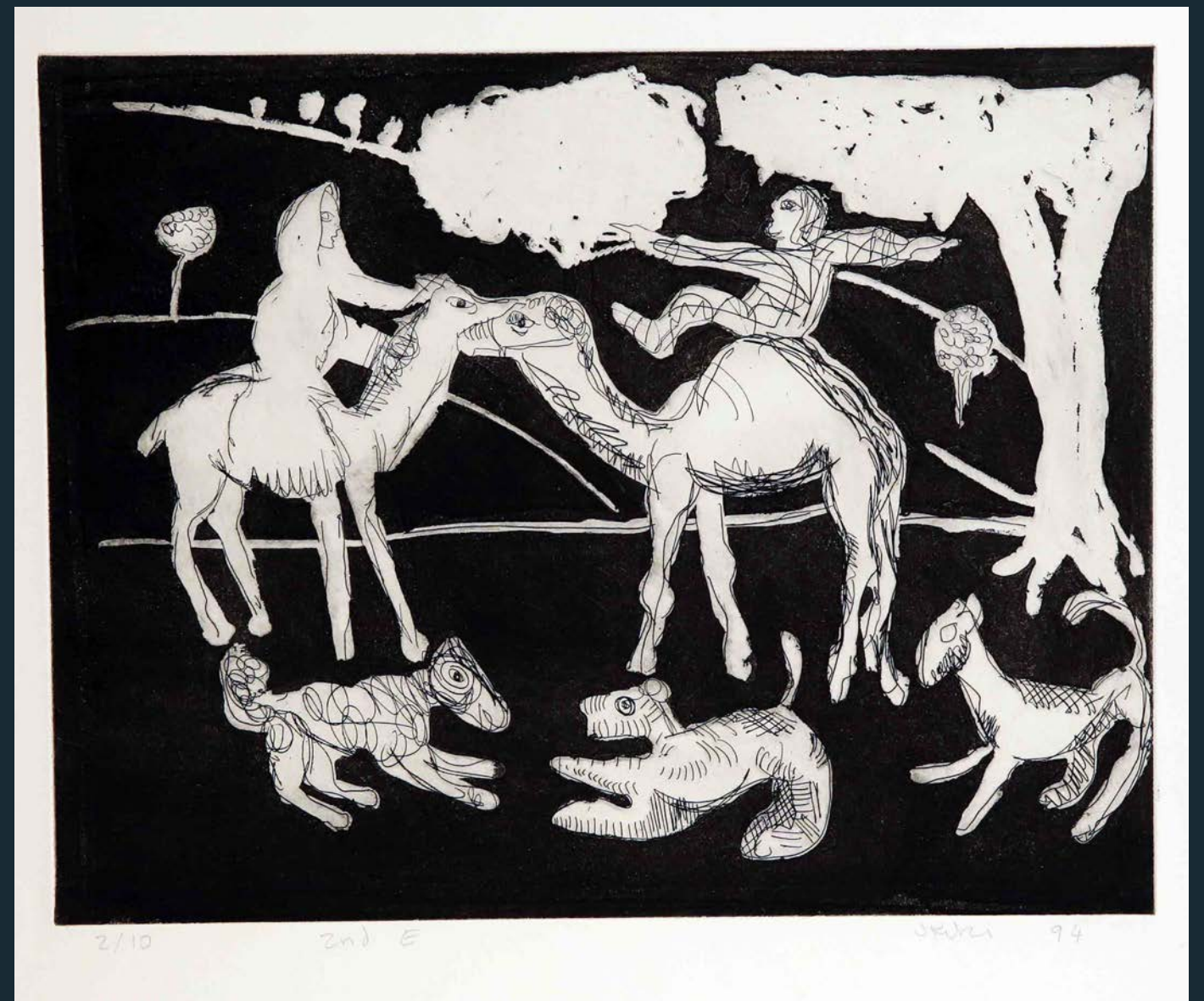
TAVERNA SCENE (CARMINA BURANA), etching-aquatint, 1999, 45x37cm



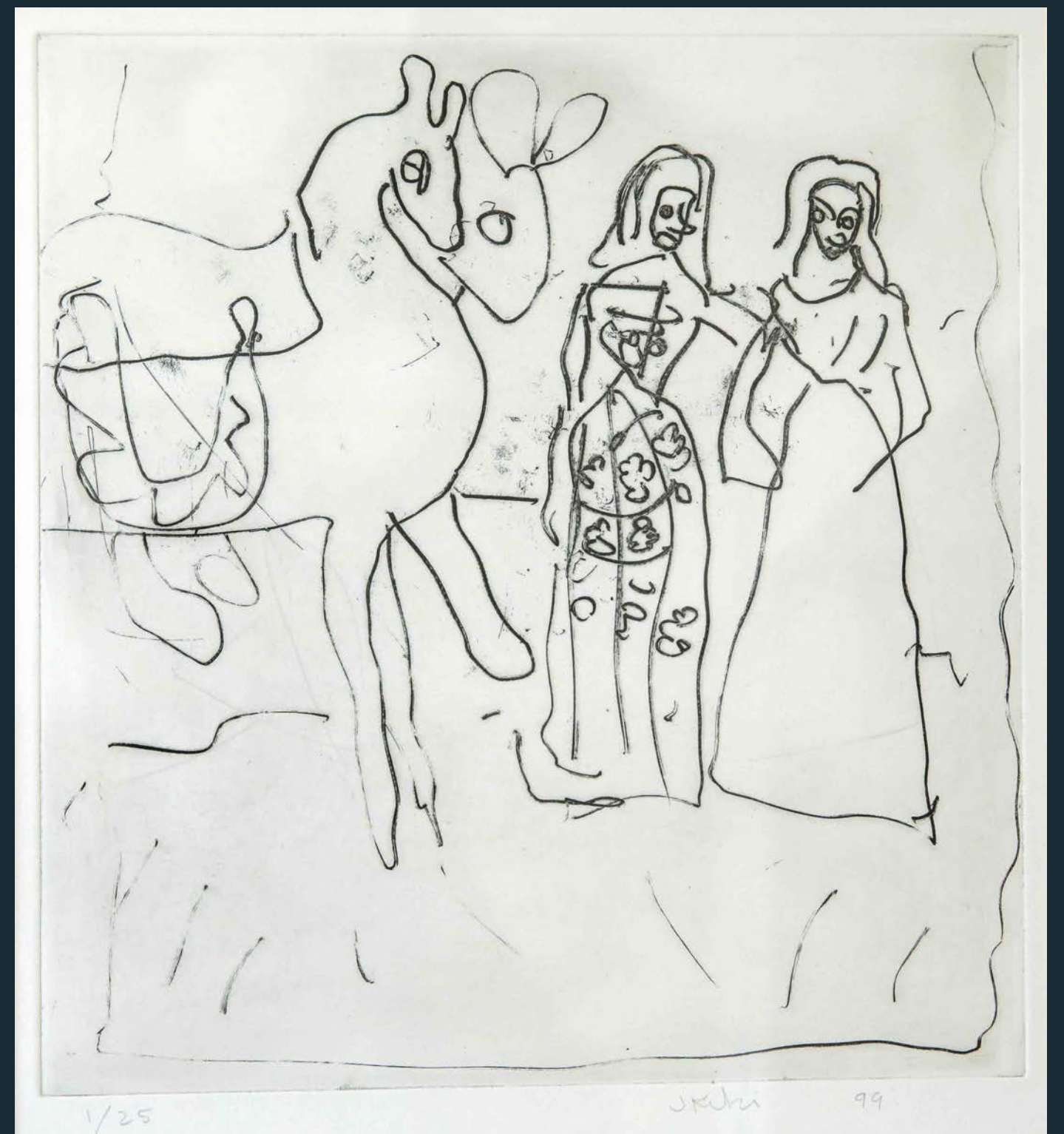
JANUS AND BATTLE SCENE (CARMINA BURANA), etching, 1999, 45x37cm



CAMEL RIDERS WITH DOGS (CARMINA BURANA), etching-aquatint, 1994, 45x37cm

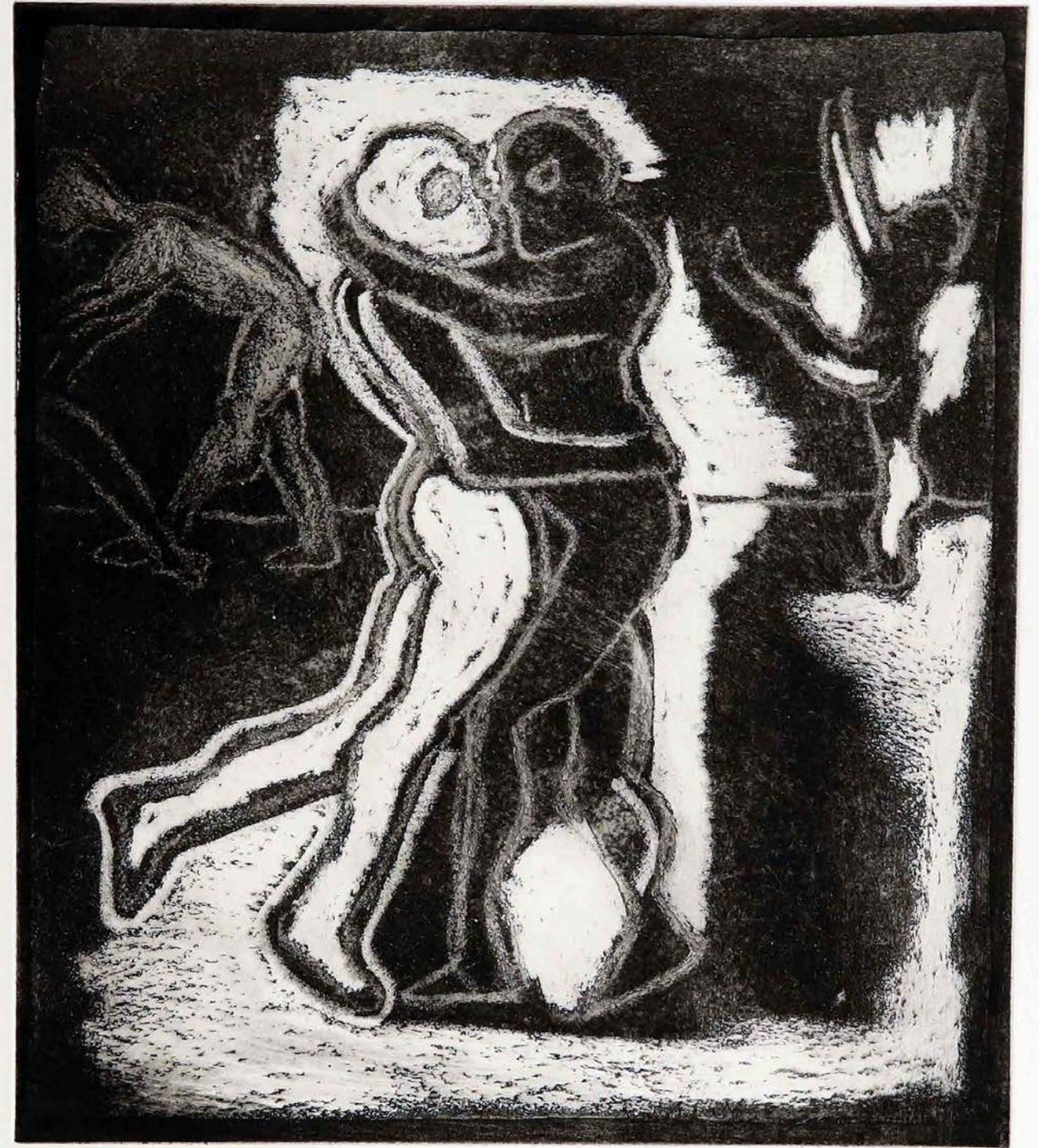


PHYLLIS & FLORA (CARMINA BURANA), soft ground etching, 1999, 30x30cm





IFANTA WITH MAIDS (CARMINA BURANA), etching, 1995, 17x15cm



1/10

2nd E

J. Kubi

94

THE KISS (LOVERS) (CARMINA BURANA), aquatint, 1994, 45x37cm

THE SLEEPING GYPSY (CARMINA BURANA), etching-aquatint, 1994, 45x37cm



2/10

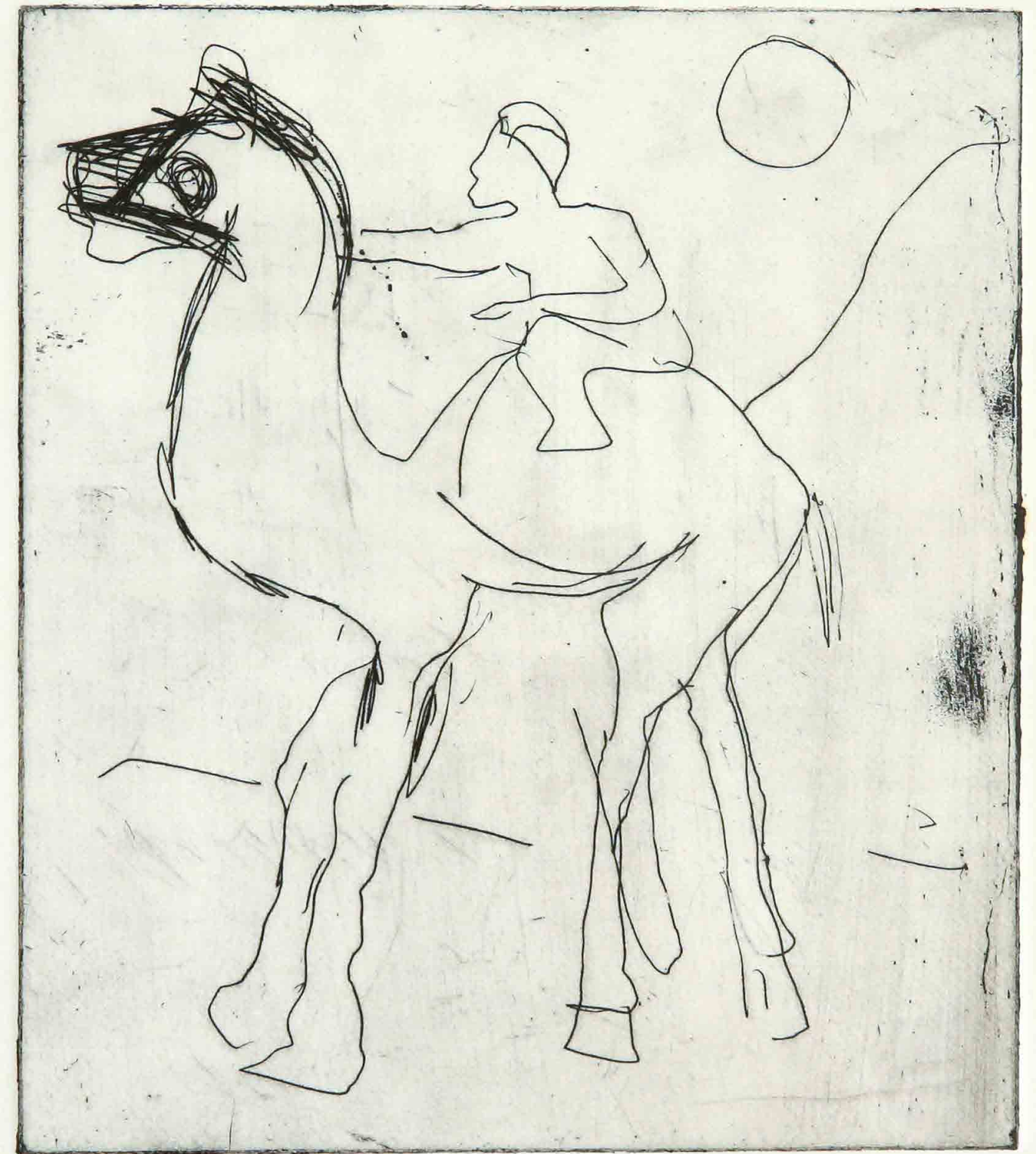
2nd E

J.M.W.

94



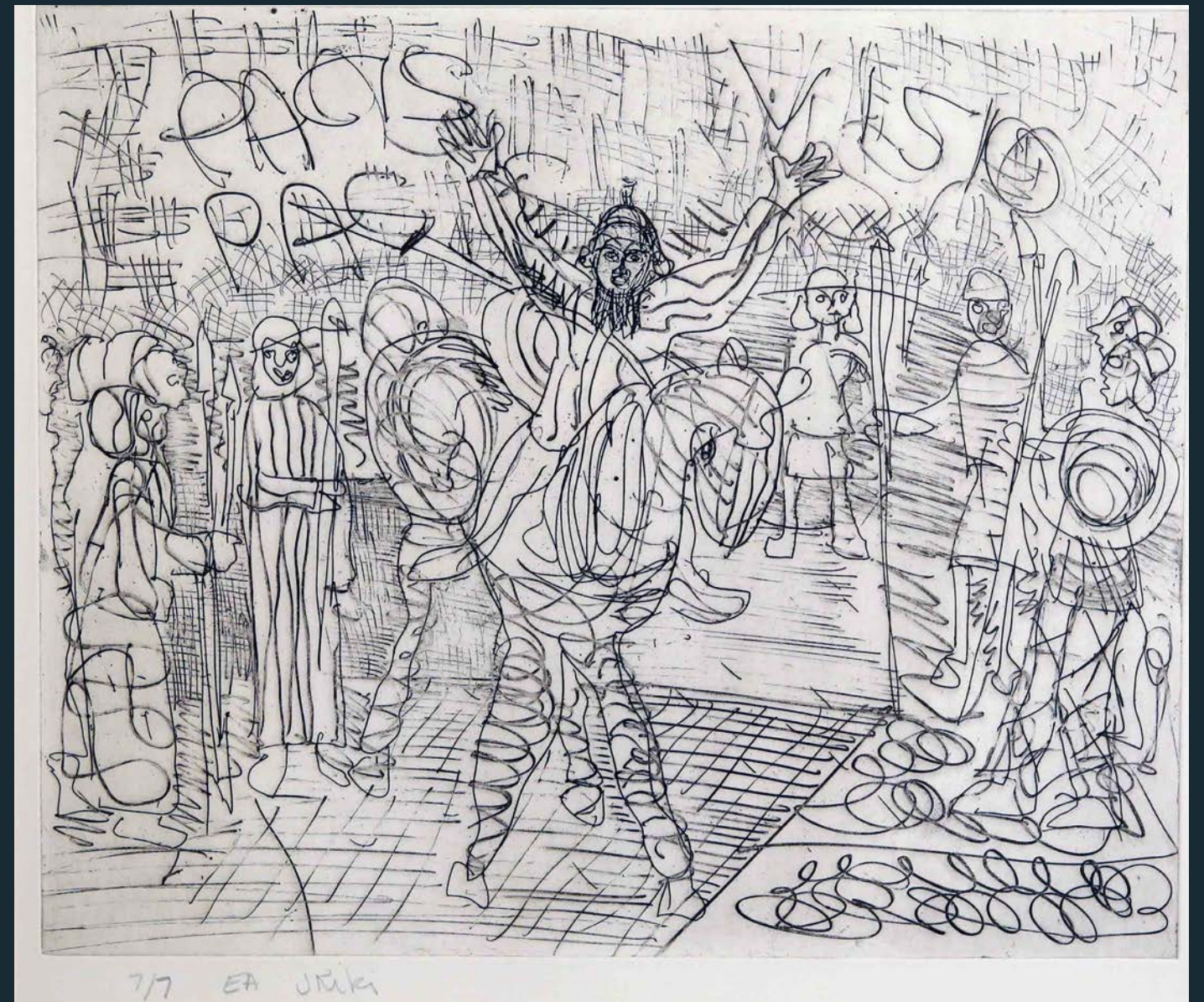
HORSEMAN WITH DOG (CARMINA BURANA), dry point etching, 1994, 20x22cm



A/P J Kuhn 94

CAMEL RIDER (CARMINA BURANA), etching, 1994, 18x15cm

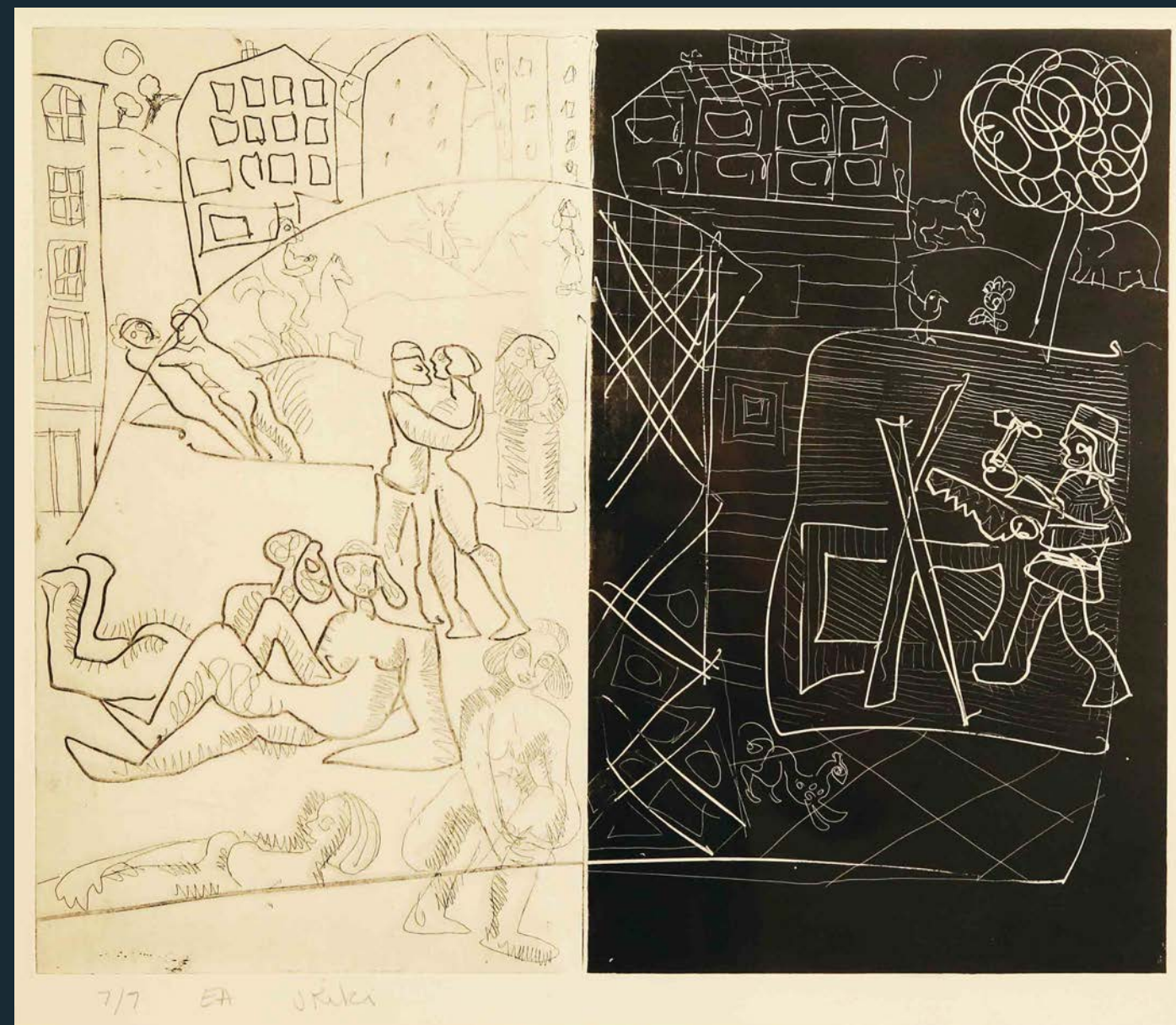
PERFORMING FIGURE PACIS VISIO I (CARMINA BURANA), etching, 1994, 45x37cm

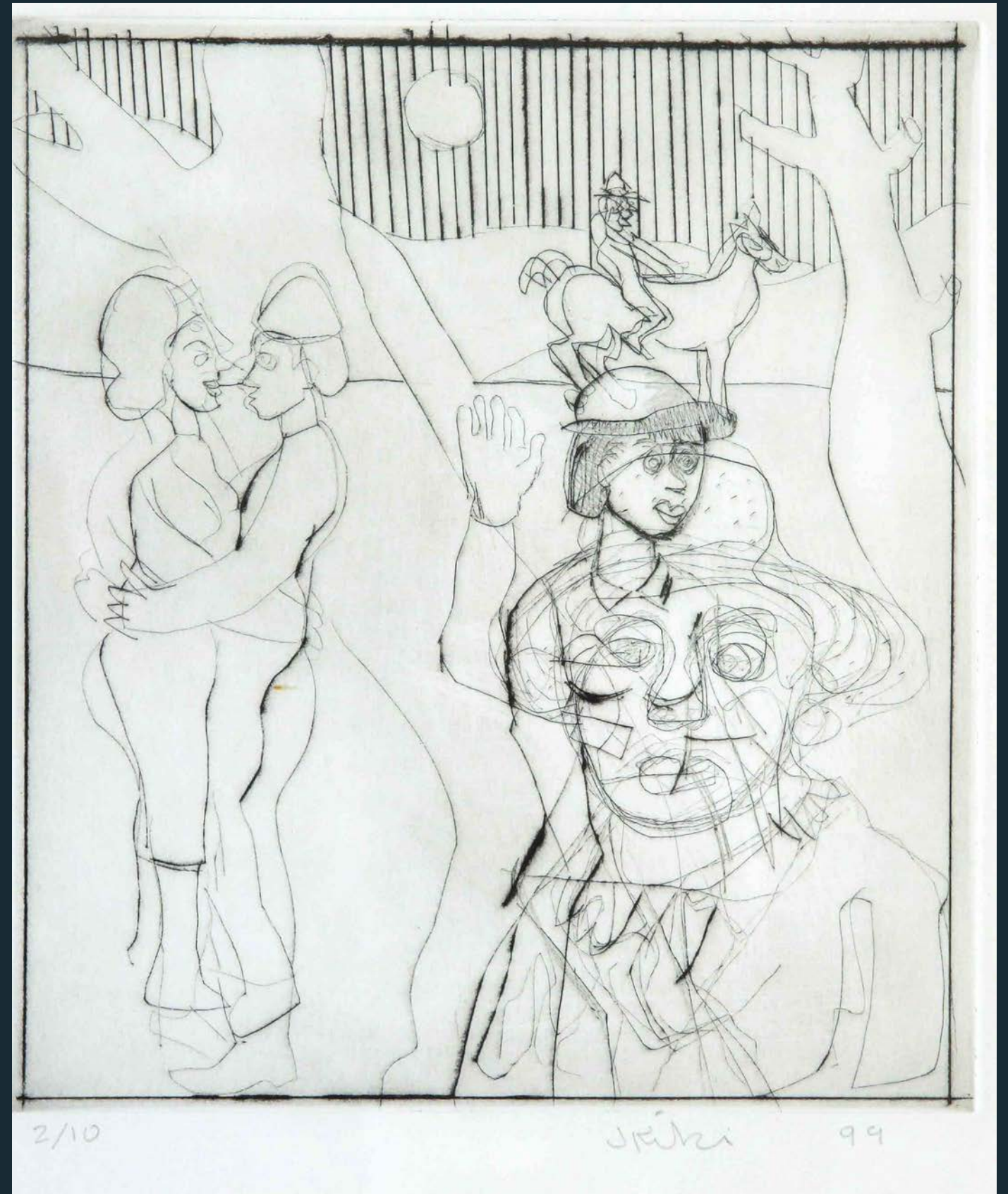


PACIS VISIO I (originally part of CB also used for PEACE), etching, 1994, 45x37cm



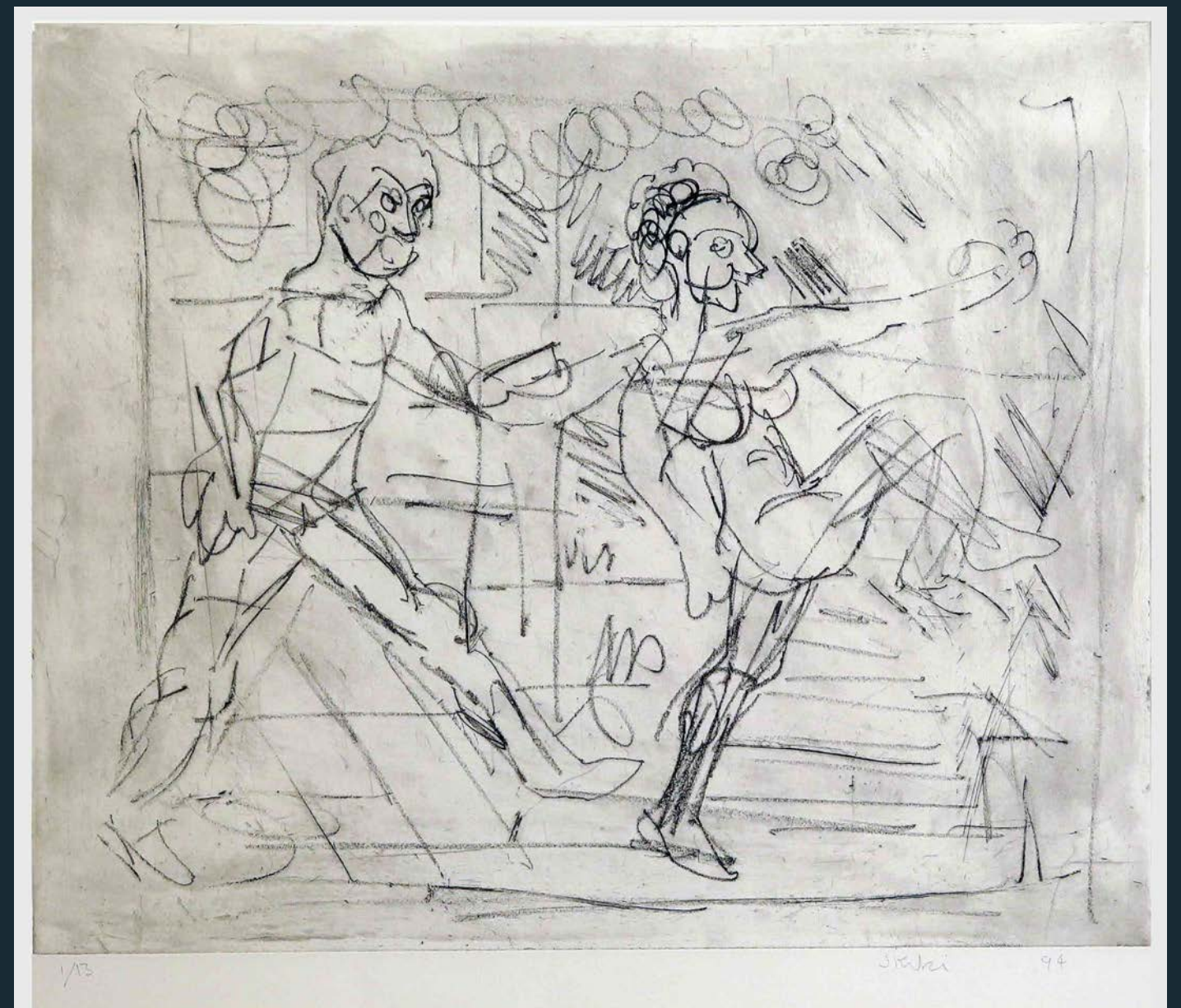
PEACE - BLACK AND WHITE, etching rolled ink, 1999, 45x37cm



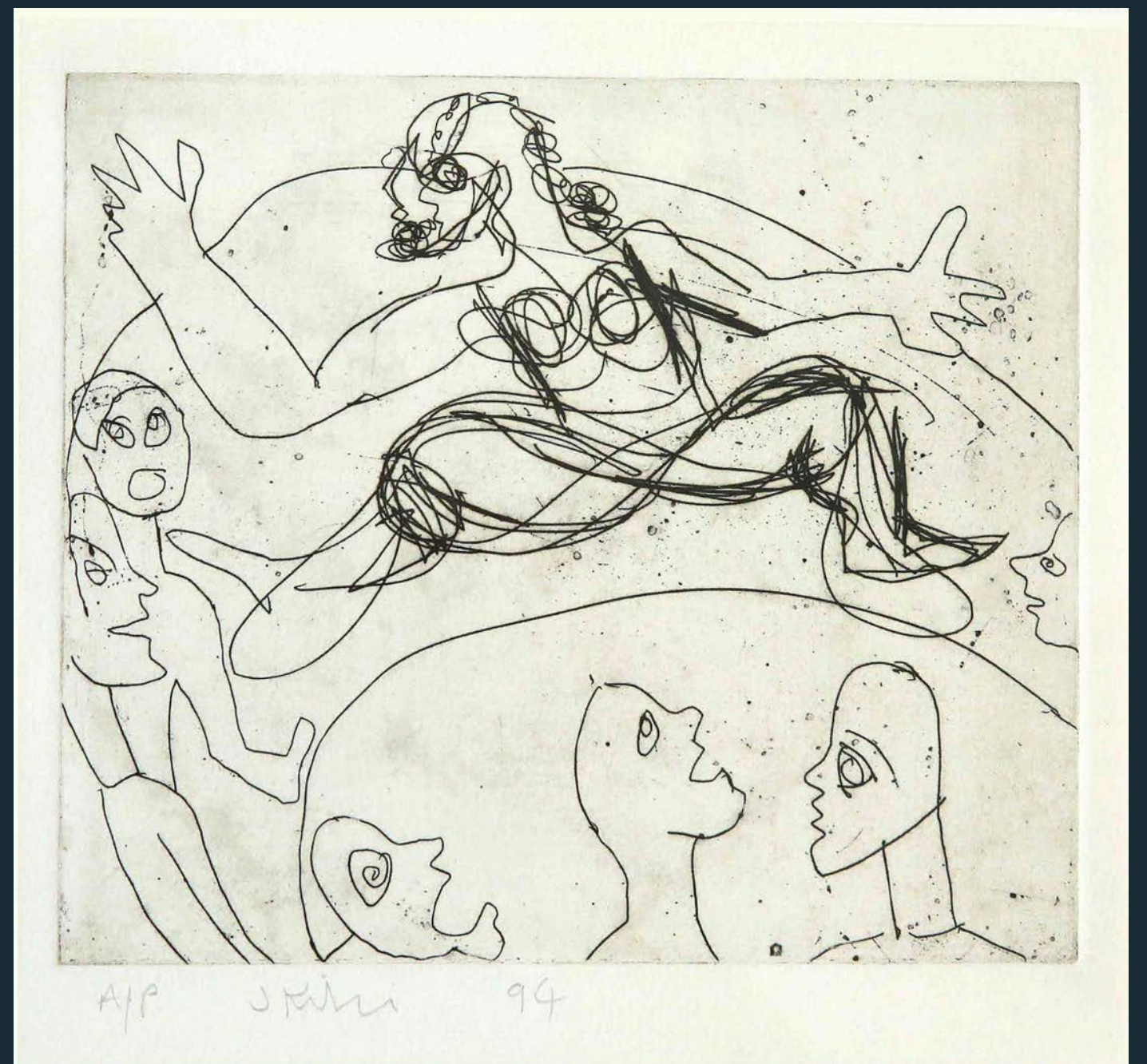


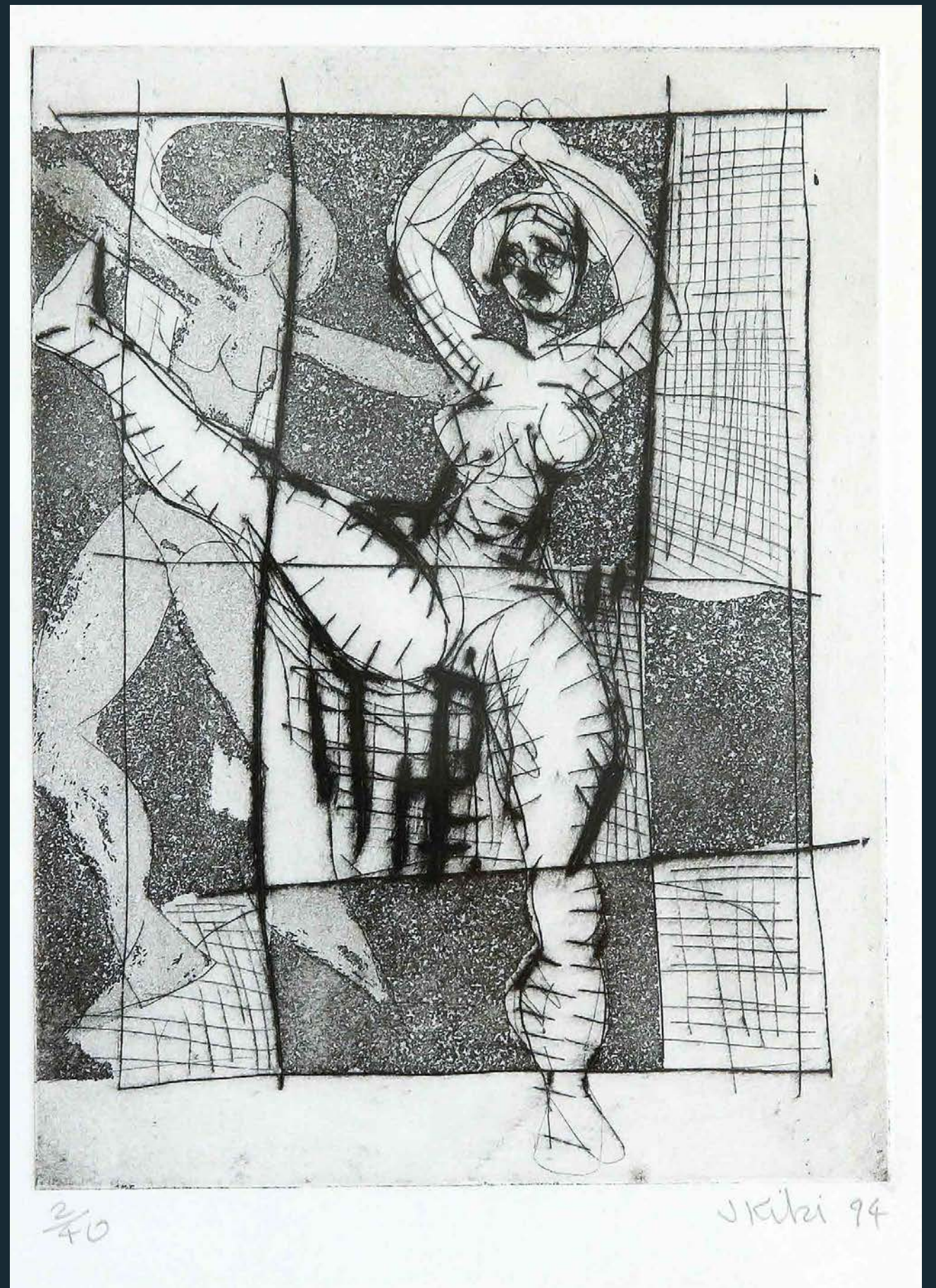
FIGURES BY MOONLIGHT, dry point etching, 1999, 23x20cm

DANCING FIGURES (CARMINA BURANA), soft ground etching, 1994, 36x44cm



PERFORMANCE, etching, 1994, 15x18cm

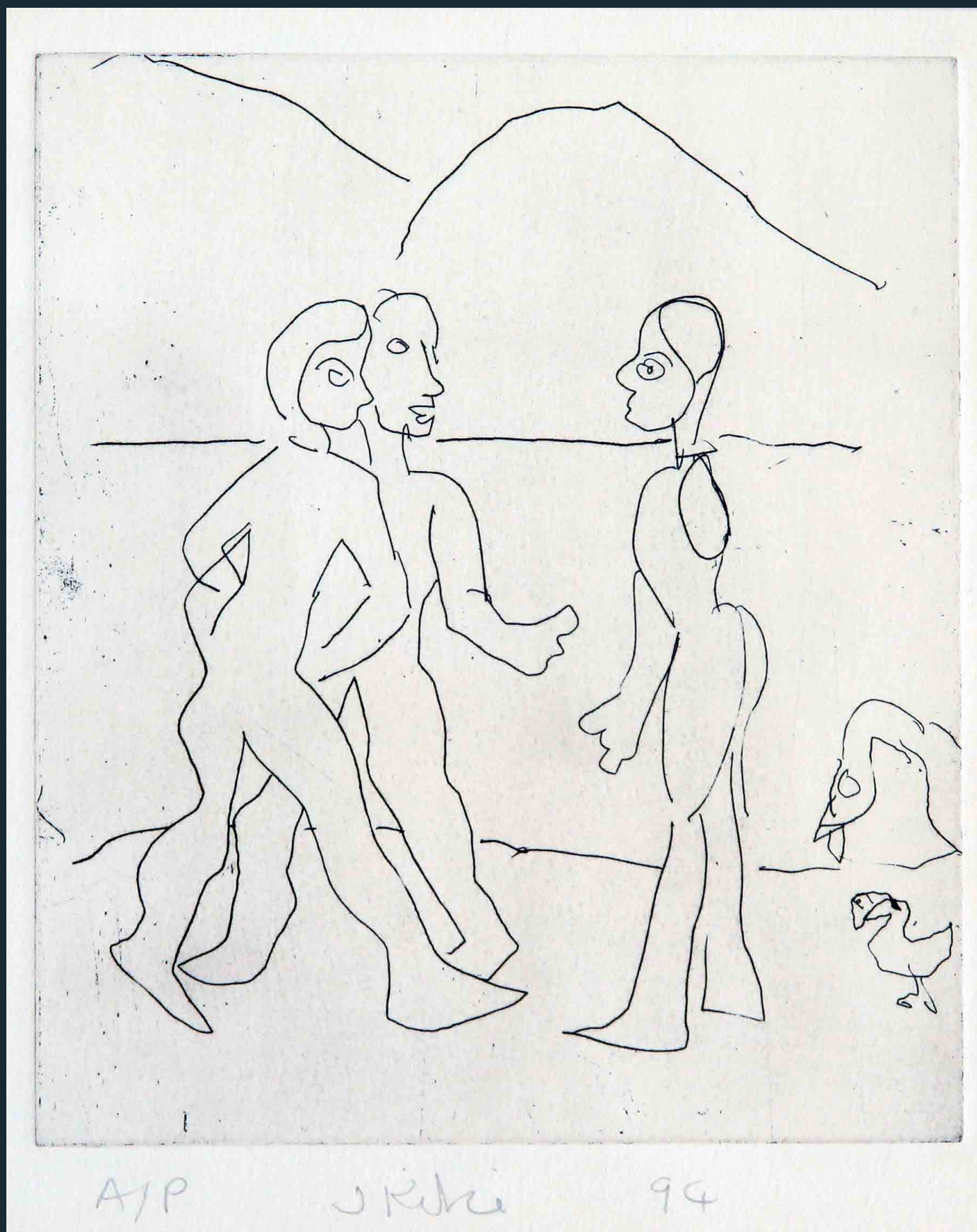




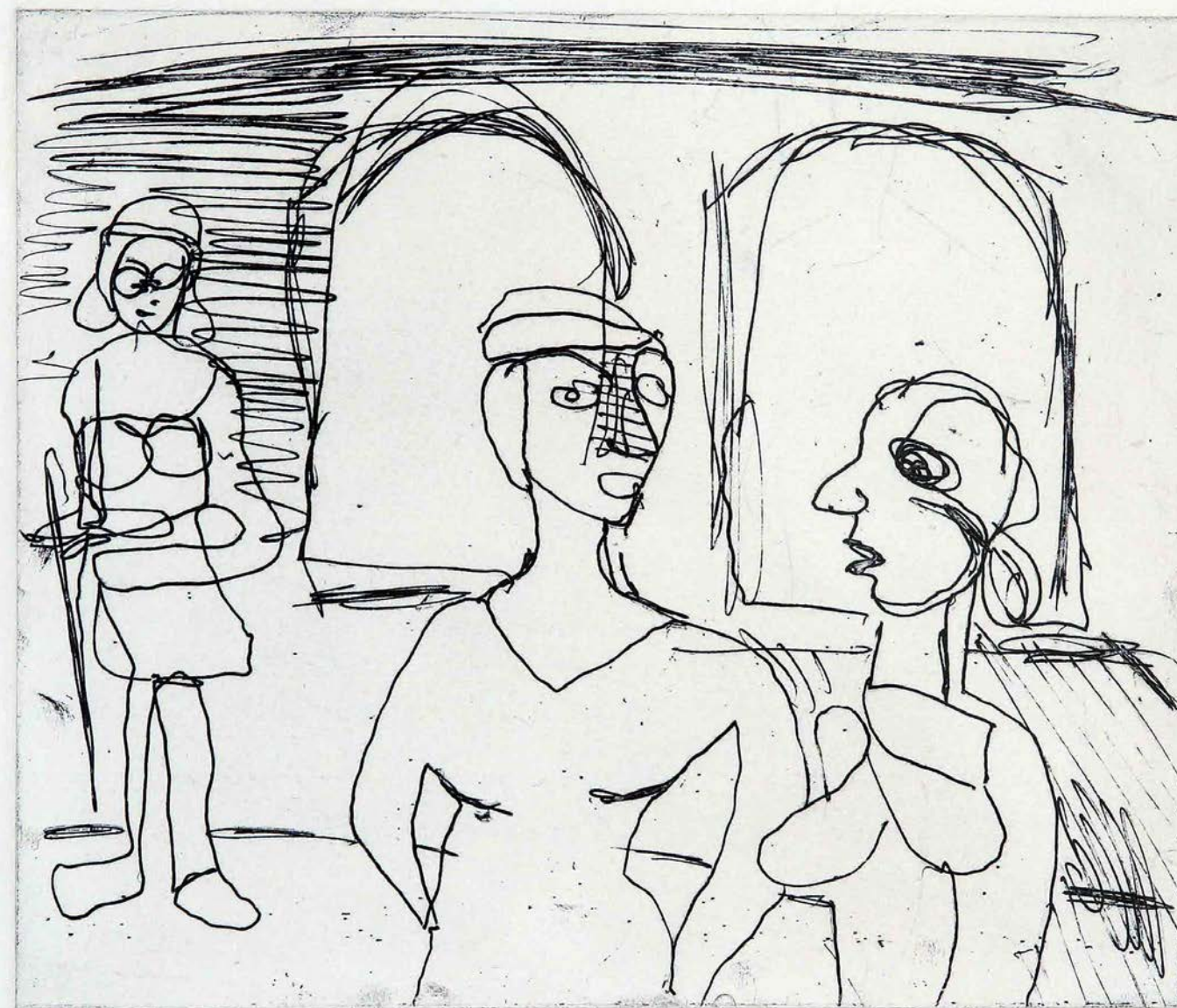
DANCER, etching-aquatint, 1994, 20x15cm

PERFORMING FIGURE, etching, 1994, 36x28cm





FIGURES IN A LANDSCAPE, etching, 1994, 15x18cm



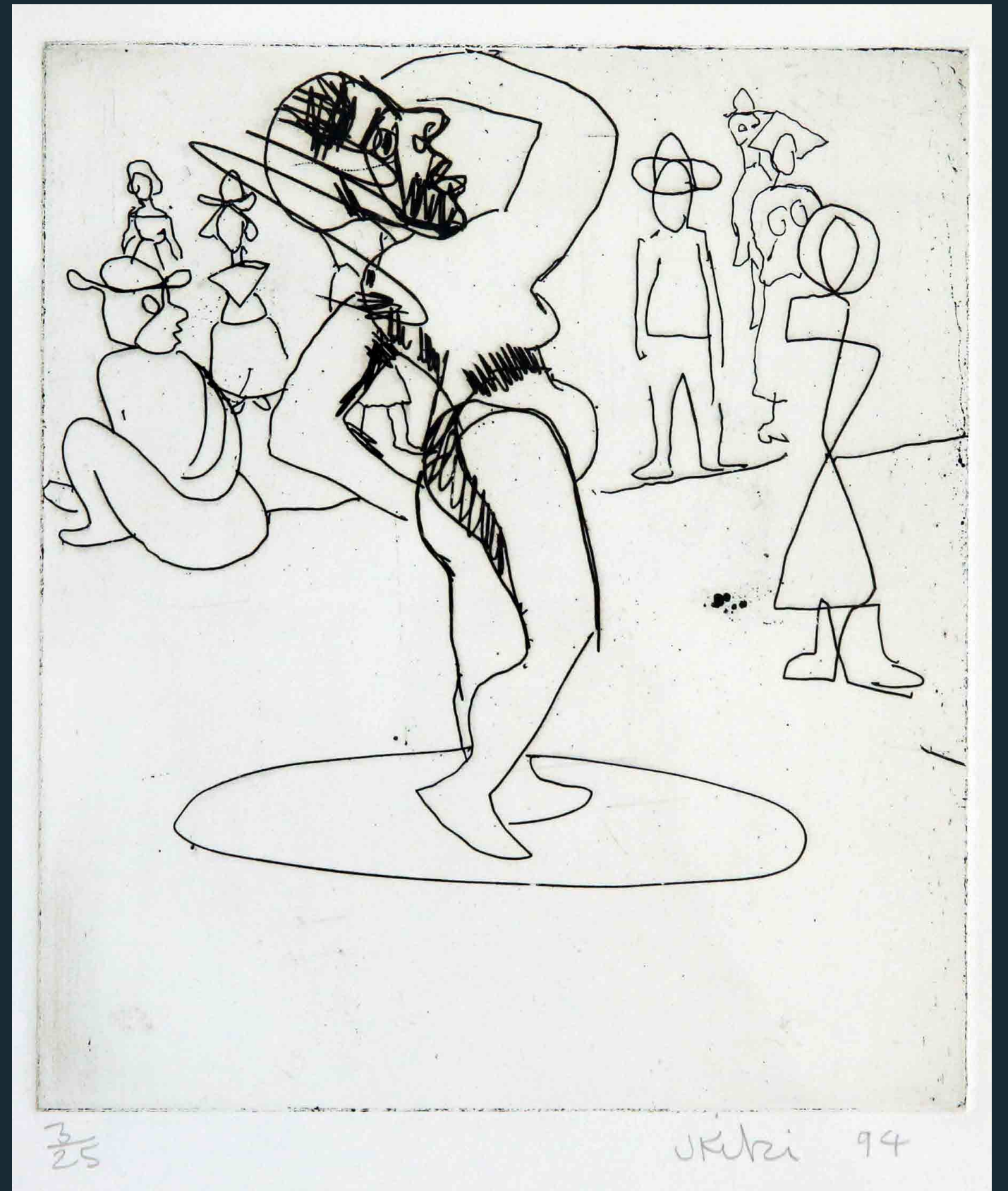
A/P

J. K. K.

94

CONVERSATION, etching, 1994, 15x18cm

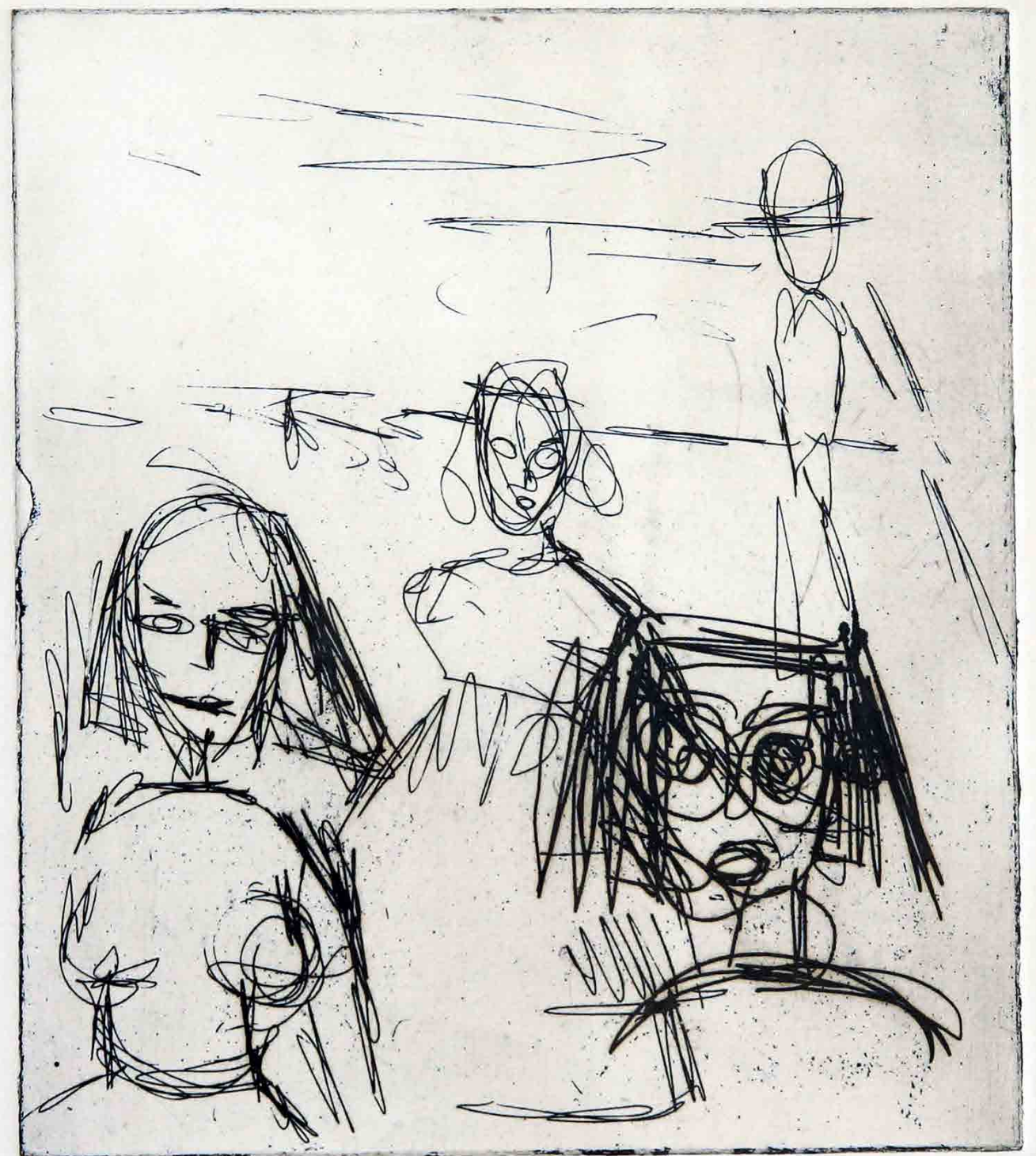
ROSER, etching, 1994, 15x18cm



3/25

UKUZI 94

WAITING, etching, 1994, 15x18cm



A/P J.R.R. 94

TWO MELANIES, etching, 1999, 32x26cm



MELANIE, etching, 1999, 32x24cm



PORTRAIT OF MARY, etching, 1999, 34x28cm



ELENI WITH BIRDS, dry point etching, 1999, 23x20cm



JOHN KIKI

b.1943 -

British painter and etcher with internatinal following, born in Cyprus. He spent his formative years in London, and summers at Great Yarmouth where he permanently settled in 1974. He studied at both the Camberwell School of Art (1960-64) under Auerbach, Proktor and Uglow, and at the Royal Academy Schools (1964-67).

By the time he finished his studies in 1967, Kiki had developed a unique style, a fusion between figurative painting, abstraction and Pop Art. In 1989 he was the subject of a film, 'In the Artists Eye', a series made by Franco Rosso for BBC Television. In 1993 he was comissioned by Art Esprit to produce a series of paintings based on the Carmina Burana poems.

His long career has included shows in celebrated galleries such as the Royal Academy, the Tate, Hayward, Barbican, and Serpentine Galleries in London; the OK Harris Gallery in Soho, New York, and the Galerie Wahrenberger in Zurich.

His works are held in major collections such as the Saatchi Collection, Gallup, Art Esprit Ltd, Finland Siemens PLC, the National Gallery of Wales, the Chantry Bequest, Gallup Finland, Siemans PLC, and the University Gallery, Liverpool.

SOLO SHOWS

2018 Art Innsbruck
2018 Galerie Wahrenberger, Zurich
2017 Merchant House Gallery, Lowestoft
2016 Gallerie Warhenberger, Zurich
2016 Gallery BOX, Zurich
2016 Art Innsbruck
2016 Art Montreux
2016 Art Zurich
2015 Art Innsbruck
2015 Corys' Pop-Up Gallery, Cardiff Bay
2015 Merchant House Gallery, Lowestoft
2014 Artspace Gallery, London
2013 Great Yarmouth Preservation Trust at 133, King Street, Great Yarmouth
2012 The Cut, Halesworth
2011 Mandells Gallery, Norwich
2010 Wymondham Arts Centre, Wymondham, Norfolk
2009 Mandells Gallery Norwich
2008 Castle Museum Retrospective, Norwich
2008 Theatre Royal, Norwich
2008 Horace Blue, Norwich
2007 Gallerie Warhenberger, Zurich
2007 Last Gallery, Zurich
2006 Chappel Galleries, Colchester
2006 O.K. Harris Gallery, New York City
2006 Warehouse Galleries, Lowestoft
2006 Ethna Dillon, Norwich
2005 Gallerie Warhenberger, Zurich
2004 St Giles Gallery, Norwich
2004 Warehouse Galleries, Lowestoft
2003 Chappel Galleries, Colchester
2002 Sea Change Gallery, Great Yarmouth
2001 Frames Gallery, Norwich
2000 O.K. Harris Gallery, New York City
1999 Gallerie Warhenberger, Zurich
1999 King of Hearts Gallery, Norwich
1999 Gallery K, London
1998 Art Space Gallery, London

1998 Gallery Warhenberger, Zurich
1997 Concourse Gallery, Barbican Centre, London
1997 Gallery Warhenberger, Zurich
1996 Hannah Feldman Gallery, Bern (Hauts de Gstaad)
1996 Galerie Waltraud Matt, Lichtenstein
1995 Art Space Gallery, London (Monoprints and Etchings)
1995 Gallery Warhenberger, Zurich
1995 Museum of Zagreb
1994 Gallery Warhenberger, Zurich
1993 Hannah Feldman Gallery, Bern (Hauts de Gstaad)
1991 Art Space Gallery, London
1990 Norwich Gallery, Norwich

SELECTED GROUP SHOWS

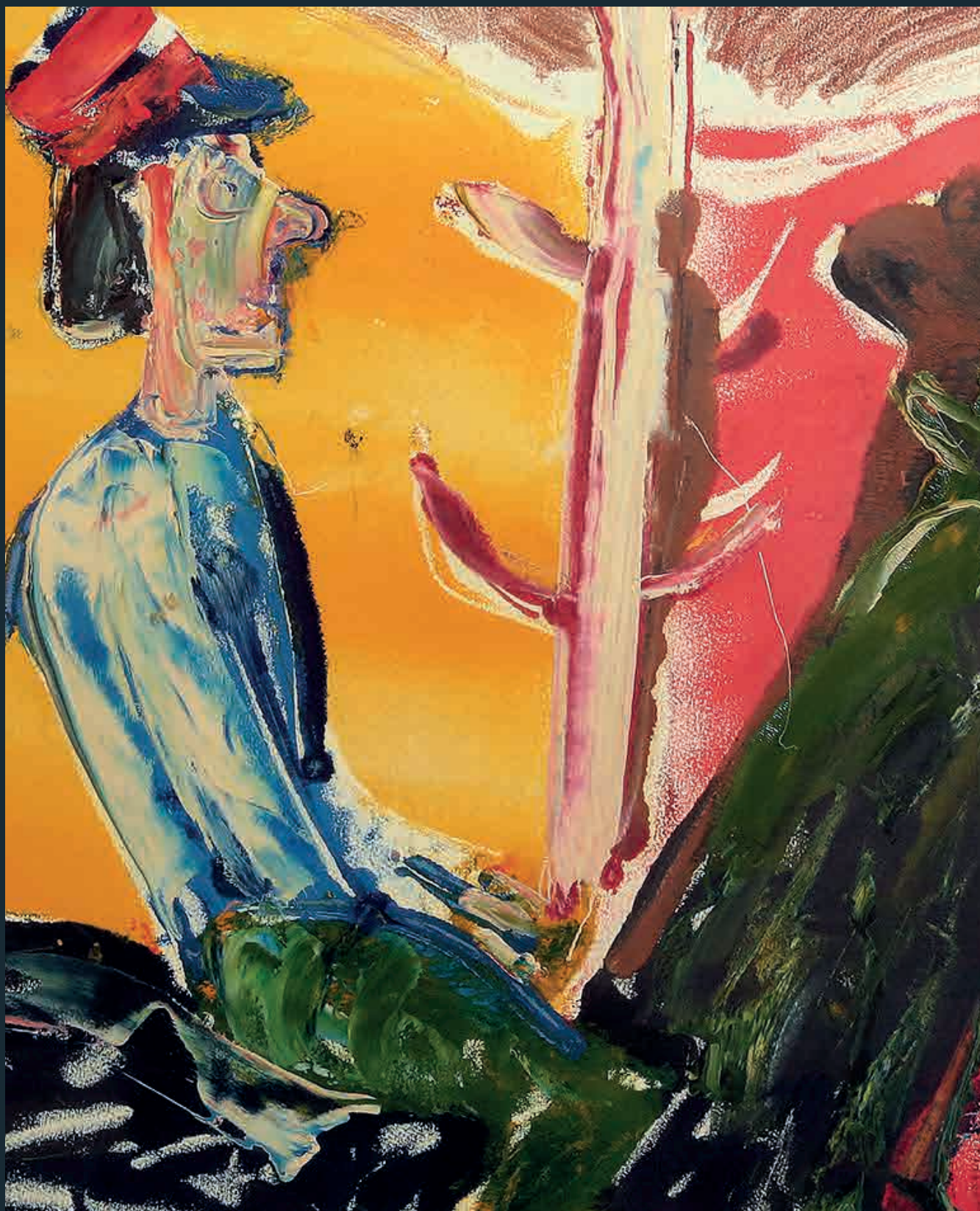
2018 Art Innsbruck
2017 Art Innsbruck
2017 Mandell's Gallery Norwich
2016 Contemporary Art Fair, Zurich, Switzerland
2011 Artspace Gallery London 'Flashback'
2010 18/21 Gallery, Norwich
2010 King of Hearts, Norwich
2006 Gasiunasen Gallery, Palm Beach, Florida
2005 Norwich Castle Museum, Norwich
2004 St Giles Gallery, Norwich
2004 O.K. Harris Gallery, New York City
2003 O.K. Harris Gallery, New York City
2002 O.K. Harris Gallery, New York City
2001 O.K. Harris Gallery, New York City
2001 'The Naked Truth', Fermoy Gallery, King's Lynn Arts Centre
2001 'Garden of Earthly Delights', Art Space Gallery, London
1999 Paintings for the Circus, Great Yarmouth
1999 Innsbruck Art Fair, Germany
1999 King's College Hospital, London
1998 King of Hearts Gallery, Norwich
1998 Innsbruck Art Fair, Germany

PUBLICATIONS

1993 Commissioned by Art Esprit for paintings based on Carmina Burana
1991 Imprimis Editions and Art Esprit, paints and conversations with Keith Patrick
1989 Subject of a film in the 'Artists Eye' series made by Franco Rosso for BBC TV

WORKS IN MAJOR COLLECTIONS INCLUDE

Museum of Zagreb
Chantry Bequest
National Gallery of Wales
The Saatchi Collection
Gallup
Finland Siemens PLC
Art Esprit Ltd.
University Gallery, Liverpool
Castle Museum, Norwich



gallery
K

14 Evrou, Strovolos, 2003, Nicosia Tel. +357 22 341122, Fax. +357 22 341124
Open Monday to Friday 9.30 - 13.00 3.30 - 19.00, Saturday 10.00 - 16.00
www.gallerykcyprus.com info@gallerykcyprus.com